



# DMS Data Migration Server

**FAST, SIMPLE,  
SAFE MIGRATIONS  
FROM LEGACY SAN  
STORAGE**

With the increased adoption of new physical, virtual, cloud, and hybrid storage systems, the need to migrate data is as urgent as ever. However, most migration projects still require time-consuming and risky changes across the SAN, such as installing drivers at the hosts, changing FC zones, and LUN masking. Downtime is often required to deploy the solution.

As the acceptable migration window shrinks, organizations need a faster, simpler approach. The Data Migration Server (DMS) solution provides the answer.

## Zero Downtime, Fast Migration

The **Data Migration Server (DMS)** is a unique solution that enables dynamic, centralized, automated migration without requiring any changes to the storage infrastructure. Powered by patented Transparent Data Interception (TDI) technology, DMS installs into any live system in minutes, and automatically discovers all hosts and LUNs for disk-based, block-level migration.

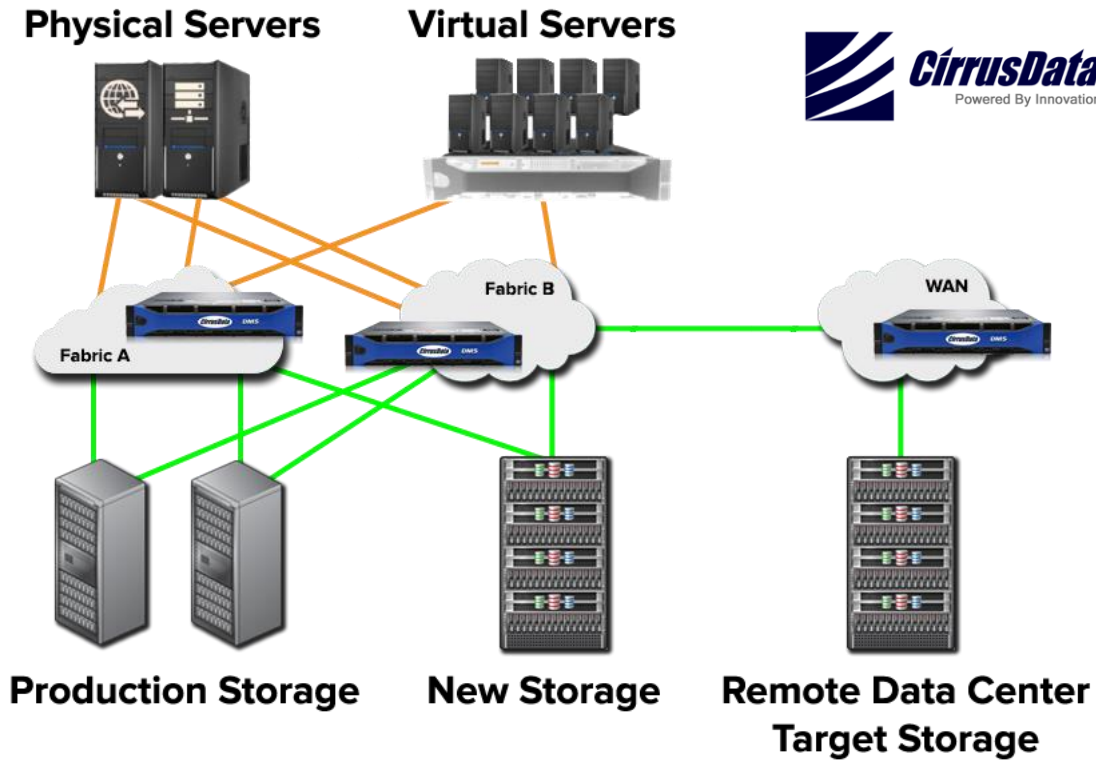
Once inserted, DMS is aware of all reads and writes to and from production storage. Via the included storage plug-ins, users can automate allocation and configuration of the new destination storage at the local or remote data center. iQoS enables migration jobs to be defined and scheduled with various migration priorities and aggressiveness levels to ensure optimal traffic efficiency and productivity at all times. After data migration has completed, the DMS-exclusive pMotion feature facilitates cut-over without downtime, allowing old storage to be immediately retired.

DMS continues to save enterprises and services organizations an enormous amount of planning and execution time for data migrations regardless of destination. By eliminating the downtime associated with traditional migration methods, companies can realize the ROI of their new storage faster and more cost effectively.

## FEATURES

- Patented TDI technology facilitates zero-downtime deployment
- Plugs directly into live SAN systems
- No re-configuration of client hosts, SAN switch zoning, or storage
- Provides Real-time view of activities and environment
- Migrations can be physical-to-physical or physical-to-virtual
- Intelligent QoS (iQoS) auto-adjusts performance based on I/O traffic
- Dynamic checksum ensures data integrity
- High availability (HA) option for full redundancy
- Optimized TCP/IP transport and AES-256 encryption for efficient and secure remote migration
- DMS-exclusive pMotion allows zero-downtime cutover
- Secure erasure for complete data wiping
- Cost-effective, centralized migration

Cirrus Data's DMS installs in minutes into a heterogeneous environment without requiring downtime and can migrate data either locally or remotely, between physical and/or virtual systems.



Specifications	DMS-4000T	DMS-4000	DMS-8000
Form Factor	2 nodes in one 2U	2U rack mount	
Weight	85 lbs (25 kg)	58 lbs (26.3 kg)	
Size	3.47 x 17.25 x 28.5 in (88 x 438 x 724 mm)	3.44 x 17.08 x 29.75 in (87 x 433 x 756 mm)	
Power	2 Hot-plug dual supply		
Heat	2086 BTU/hr	2891 BTU/hr	
Processor	Dual Intel Xeon 6 cores / node		
Memory	16GB / node		
Nodes per Set	2		
Total Number of Nexus	8 (16 x 8Gb FC Ports)	8 (16 x 8Gb FC Ports)	16 (32 x 8Gb FC Ports)
Total Remote Migration Ports	2	4 (4 x 1Gb Ethernet)	
Total Max. Throughput	6 GB/s		12 GB/s
Total Max. IOPS	1,000,000		2,000,000

**CirrusData**®

© 2017 Cirrus Data® Solutions Inc.  
All rights reserved.

Follow us on Social Media:



Or visit us at: <http://www.cdsi.us.com>